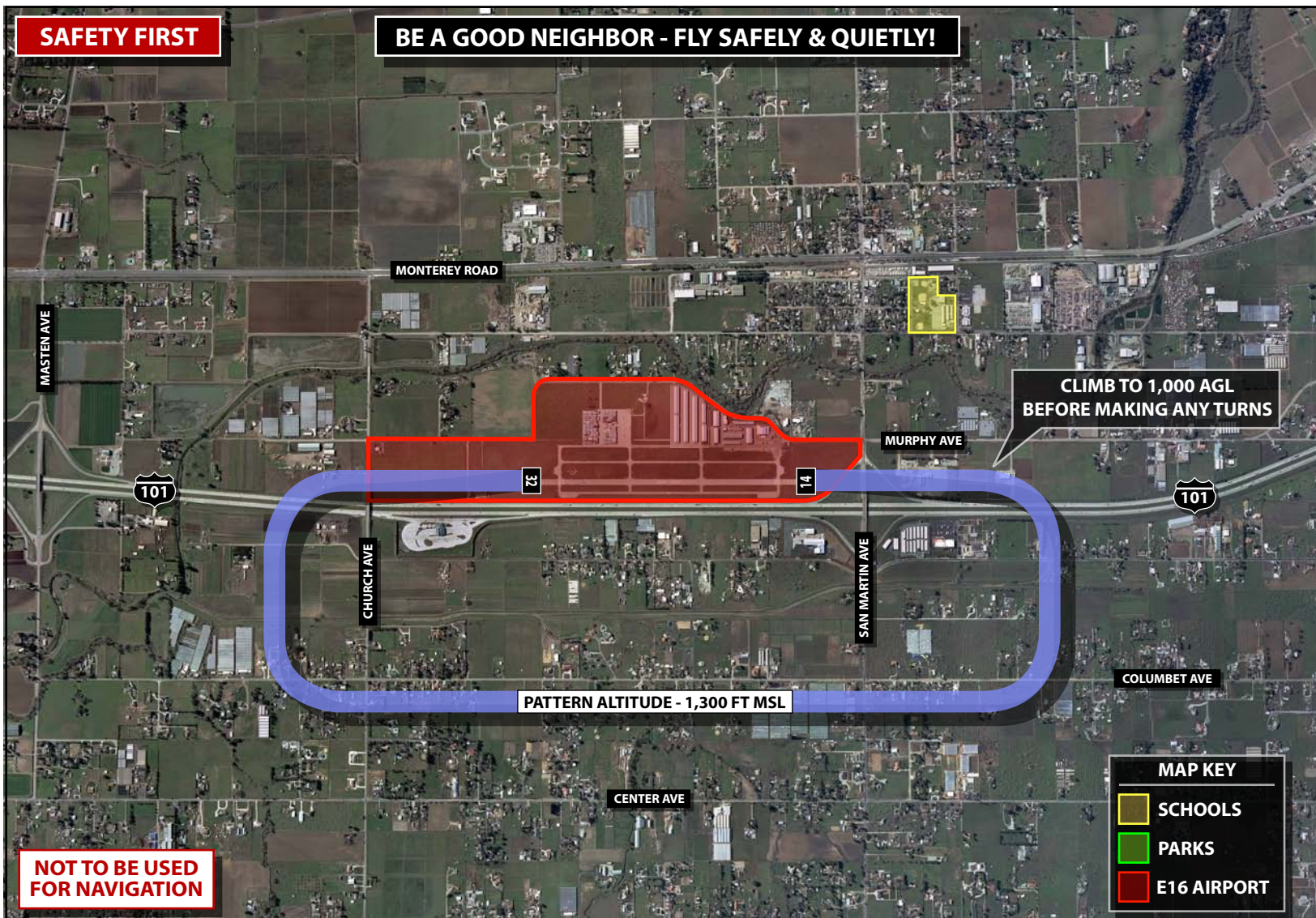


**SAFETY FIRST**

**BE A GOOD NEIGHBOR - FLY SAFELY & QUIETLY!**



**NOT TO BE USED FOR NAVIGATION**

### NOISE ABATEMENT PROCEDURES

#### DEPARTURES

Climb to 1,000 feet AGL before making any turns. Please give consideration to the residents living under the traffic pattern at South County Airport.

#### ARRIVALS

No crosswind turns below 1,300 feet MSL; Approaching aircraft fly downwind legs East of freeway. Left traffic Rwy 14 & Right traffic Rwy 32 to avoid school.

#### HIGH PERFORMANCE AIRCRAFT

Please use reduced power settings whenever possible to reduce noise impact. Airport closed to pure jet aircraft except those meeting FAR 36 noise criteria.

**- SAFETY ALWAYS SUPERSEDES NOISE ABATEMENT -**

## SANTA CLARA COUNTY AIRPORTS



# SOUTH COUNTY AIRPORT

**E16**

www.countyairports.org

### GENERAL INFORMATION

Latitude: **37°04'53.71" (37.081586°) North**  
Longitude: **121°35'48.50" (121.596806°) West**

Location: **1 NM East of San Martin, CA 95046**

Field Elevation: **281 ft / 85.65m MSL (Estimated)**

Pattern Altitude: **1300 ft MSL**

Variation: **15 E (2000)**

Sectional Chart: **San Francisco**

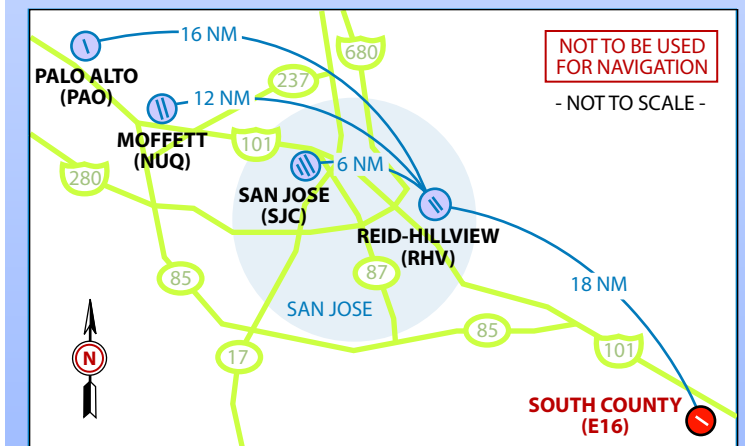
### AIRPORT LIGHTING

32/14 & Taxiways Lighted, Pilot Controlled on Unicom (5 clicks)

### FREQUENCIES

Unicom:	<b>122.70</b>	NORCAL Appr:	<b>120.10</b>
NUQ ASOS:	<b>124.175</b>		<b>133.95</b>
WVI ASOS:	<b>132.175</b>		<b>134.50</b>
Noise Abatement:	<b>N/A</b>	NORCAL Depart:	<b>121.30</b>
Oakland FSS:	<b>122.5</b>	SJC ATIS	<b>126.95</b>
Oakland Center:	<b>127.45</b>		

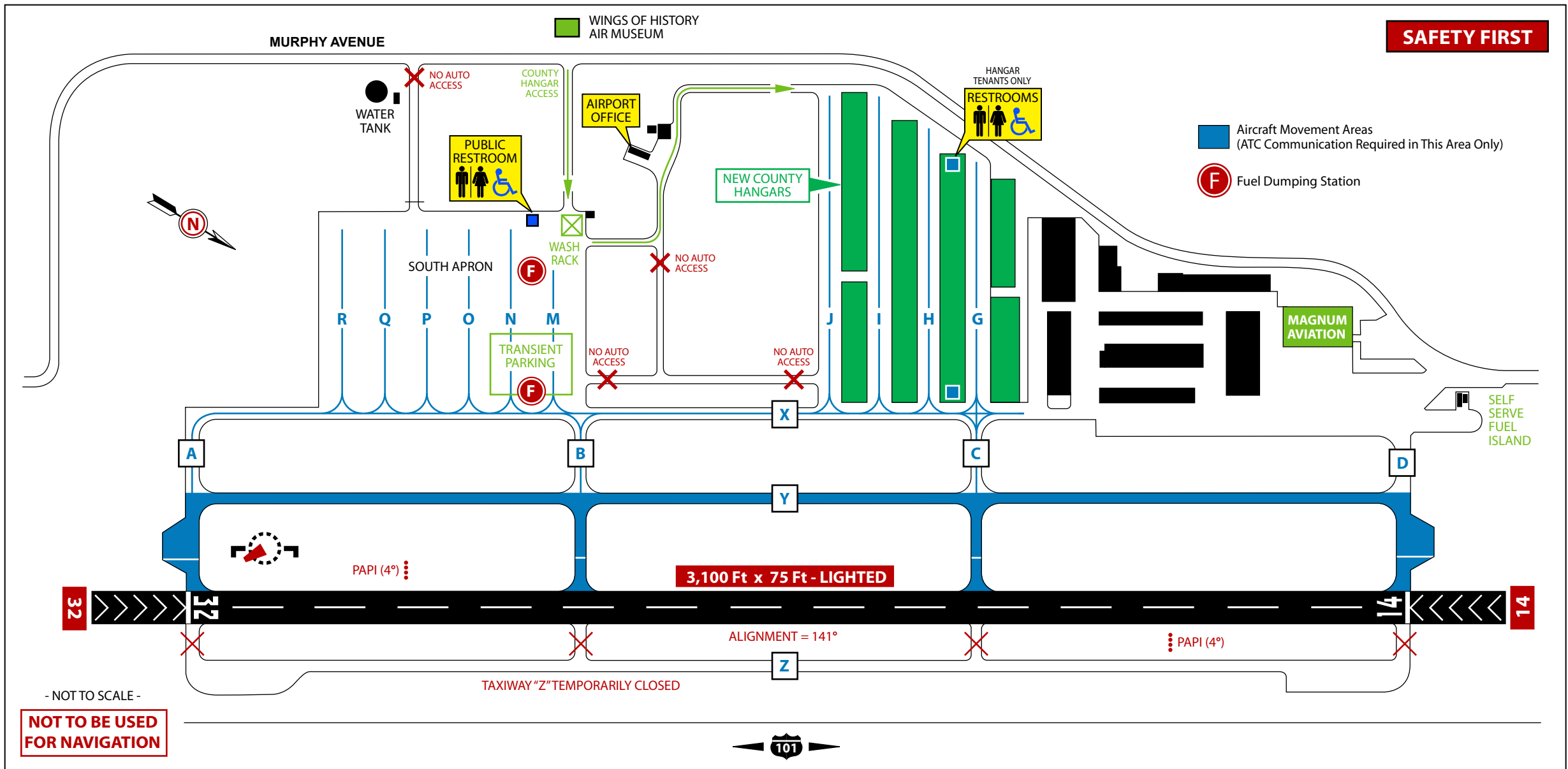
### AREA MAP



**NOT TO BE USED FOR NAVIGATION**

- NOT TO SCALE -

**SOUTH COUNTY (E16)**



**AIRPORT SURFACE MAP**

**SOUTH COUNTY AIRPORT E16**

13030 Murphy Avenue  
San Jose, California 95046  
www.countyairports.org

**SERVICES - Magnum Aviation**

Mobile Fuel Service	100LL	Oxygen Service
	Jet-A	Power Cart
24 Hour Self Service	100LL	Aircraft Maint

**FLIGHT SCHOOL - West Valley Flying Club**

Flight School	Aircraft Rental	Pilot Supply Store
---------------	-----------------	--------------------

**WINGS OF HISTORY AIR MUSEUM**

Aircraft Exhibits - Engine Exhibits - Museum Library

12777 Murphy Avenue, San Martin, CA 95046-0495  
Hours of Operation: Saturday and Sunday, 11am to 4pm.

Phone: (408) 683-2290 Fax: (408) 683-2291

**PHONE DIRECTORY**

Airport Operations	408-683-4741
South County AWOS	- Future -
Airport Noise Abatement	866-638-2344
FSS/Weather/NOTAMS	800-272-1180
San Jose FSDO	408-291-7681
Magnum Aviation	408-683-4102